

Social Security: South Dakota Quick Facts



South Dakota's aged population is expanding.

In 2003, South Dakota's population was about 764,000, with 14% being age 65 and older (109,000 residents).¹ In 2015, the 65+ population will make up 15% of the state's population, and in 2020, it will be 16%.²

South Dakota is one of the poorest U.S. states.

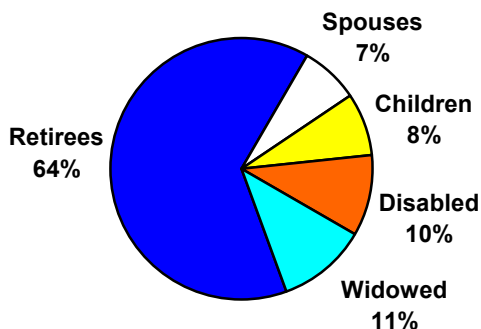
The average personal income in South Dakota was \$28,856 in 2003. Among the Midwest states South Dakota's (33rd) per capita income ranks higher than Iowa (37th) but lower than Minnesota (10th), Nebraska (24th), and North Dakota (32nd).³

One in six South Dakota residents receives Social Security.

The Social Security program not only provides monthly benefits to retired workers, but also to families when the worker retires, dies, or becomes disabled. In 2003, over 47 million Americans received Social Security benefits; of these, 138,570 live in South Dakota.⁴

In 2003, one in six South Dakota residents received Social Security. While 64% of beneficiaries are retirees, 36% are not: 15,770 are widows and widowers; 13,220 are disabled workers; 10,200 are wives and husbands; and 10,580 are children.⁴

South Dakota Social Security Beneficiaries



Social Security pumps over 1 billion dollars into South Dakota's economy.

In 2003, South Dakota residents received an estimated 1.3 billion dollars from Social Security.⁵ The average yearly Social Security benefit for a South Dakota retiree in 2003 was \$10,145—or about \$845 a month.⁴

Nearly all South Dakota residents age 65 or older receive Social Security.

Nationally, almost 16% of all people receive Social Security benefits; in South Dakota, 18% of residents also receive benefits. However, older people are more likely to receive Social Security, with 91% of those over age 65 receiving it nationwide, and 96% of older South Dakotans receiving it.¹

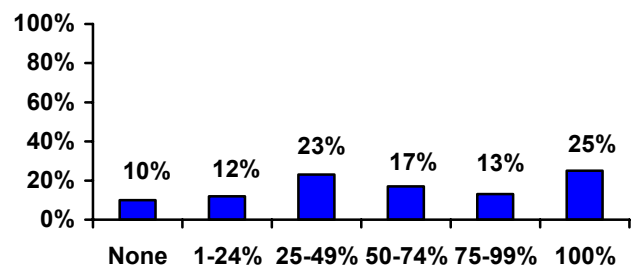
Social Security lifts nearly half of South Dakotans retirees from poverty.

Nearly half (47%) of the nation's older population would be living in poverty if they were not receiving Social Security. In South Dakota, 52% of the state's 65+ population (44,000 people) would have incomes below the poverty line if they did not have Social Security.⁶

Social Security is the only source of income for one in four South Dakotans age 65+.

Social Security makes up at least half of the income for over half of South Dakotans age 65 and older. A quarter of older South Dakotans rely on Social Security as their only source of income.⁷

Income Percentage from Social Security for South Dakotans 65+



End Notes

¹ OASDI Beneficiaries by State and County, 2003.
Social Security Administration:
http://www.ssa.gov/policy/docs/statcomps/oasdi_sc/2003/table1.html

² Population of 0-85, 65-85, All Races, Both Genders by Year (South Dakota), Centers for Disease Control:
<http://wonder.cdc.gov/popu00.html>

³ Bureau of Economic Analysis, US Dept. of Commerce:
<http://www.bea.gov/bea/regional/bearfacts/statebf.cfm>

⁴ OASDI Beneficiaries by State and County, 2003.
Social Security Administration:
<http://www.ssa.gov/policy/docs/statcomps/supplement/2004/5j.html#table5.j4>;

⁵ OASDI Estimated Total Benefits Paid, 2003, Social Security Administration:
<http://www.ssa.gov/policy/docs/statcomps/supplement/2004/5j.html#table5.j1>

⁶ Sherman, A. and Shapiro, I. (2005) *Social Security Lifts 13 Million Seniors Above the Poverty Line: A State by State Analysis*. Center on Budget and Policy Priorities: www.cbpp.org/2-24-05socsec.htm

⁷ AARP analysis using data from U.S. Census Bureau: 2000
