



Social Security: Rhode Island Quick Facts



Rhode Island's aged population is expanding.

In 2003, Rhode Island's population was about 1,076,000 with 14% being age 65 and older (151,000 residents).¹ In 2015, the 65+ population will make up 15% of the state's population, and in 2025, it will be 19%.^{2,3}

Rhode Island's per capita income ranks 17th among the U.S. states.

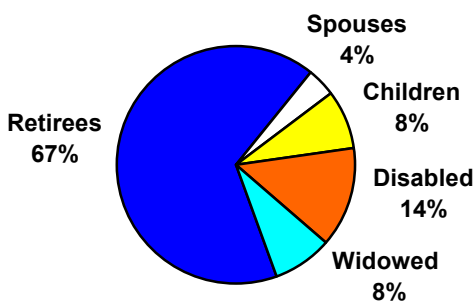
The average personal income in Rhode Island in 2003 was \$32,038, making it the 17th highest in the nation. However, Rhode Island's per capita income ranks considerably lower than Connecticut's (2nd) or Massachusetts' (4th).⁴

Nearly one in five Rhode Island residents receives Social Security.

The Social Security program not only provides monthly benefits to retired workers, but also to families when the worker retires, dies, or becomes disabled. In 2003, over 47 million Americans received Social Security benefits; of these, 191,960 live in Rhode Island.⁵

In 2003, nearly one in five Rhode Island residents received Social Security. While 67% of beneficiaries were retirees, 33% were not: 26,200 were disabled workers; 15,630 were widows and widowers; 14,410 were children; and 6,830 were wives and husbands.⁶

Rhode Island Social Security Beneficiaries



Social Security pumps nearly 2 billion dollars into Rhode Island's economy.

In 2003, Rhode Island residents received 1.9 billion dollars from Social Security.⁶ The average yearly Social Security benefit for a Rhode Island retiree in 2003 was \$11,077—or about \$923 a month.⁵

Nearly all Rhode Island residents age 65 or older receive Social Security.

Nationally, almost 16% of all people receive Social Security benefits; in Rhode Island, 18% of residents do. However, older people are more likely to receive the benefit, with 91% of those over age 65 receiving it nationwide, and 93% of older Rhode Islanders receiving it.¹

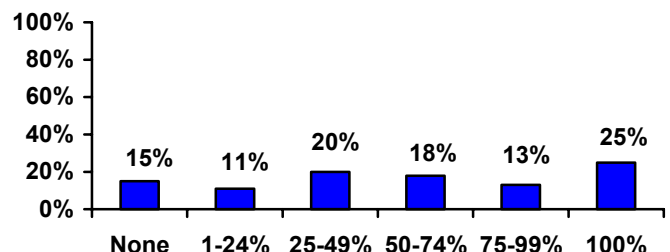
Social Security lifts nearly half of retirees from poverty.

Nearly half (47%) of the nation's older population would be living in poverty if they were not receiving Social Security. In Rhode Island, 50% of the state's 65+ population (70,000 people) would have incomes below the poverty line if they did not have Social Security.⁷

Social Security is the only source of income for one-quarter of Rhode Islanders age 65+.

Social Security makes up at least half of the income for 56% of Rhode Islanders age 65+. One-quarter of older Rhode Islanders rely on Social Security as their only source of income.⁸

Income Percentage from Social Security for Rhode Islanders 65+



End Notes

¹ OASDI Beneficiaries by State and County, 2003. Social Security Administration:
http://www.ssa.gov/policy/docs/statcomps/oasdi_sc/2003/table1.html

² Projections of the Population, By Age and Sex, of States: 1995 to 2025. United States Census Bureau:
<http://www.census.gov/population/projections/state/stpjage.txt>

³ Projections of the Total Population of States: 1995 to 2025. United States Census Bureau:
<http://www.census.gov/population/projections/state/stpjpop.txt>

⁴ Bureau of Economic Analysis, US Dept. of Commerce:
<http://www.bea.gov/bea/regional/bearfacts/statebf.cfm>

⁵ OASDI Beneficiaries by State and County, 2003. Social Security Administration:
<http://www.ssa.gov/policy/docs/statcomps/supplement/2004/5j.html#table5.j4>

⁶ OASDI Estimated Total Benefits Paid, 2003, Social Security Administration:
<http://www.ssa.gov/policy/docs/statcomps/supplement/2004/5j.html#table5.j1>

⁷ Sherman, A. and Shapiro, I. (2005) *Social Security Lifts 13 Million Seniors Above the Poverty Line: A State by State Analysis*. Center on Budget and Policy Priorities:
www.cbpp.org/2-24-05socsec.htm

⁸ AARP analysis using data from U.S. Census Bureau: 2000
