



Social Security: Montana Quick Facts



Montana's aged population is expanding.

In 2003, Montana's population was about 918,000 with 14% being age 65 and older (125,000 residents).¹ In 2015, the 65+ population will make up 19% of the state's population, and in 2025, it will be 24%.^{2,3}

Montana is one of the poorest U.S. states.

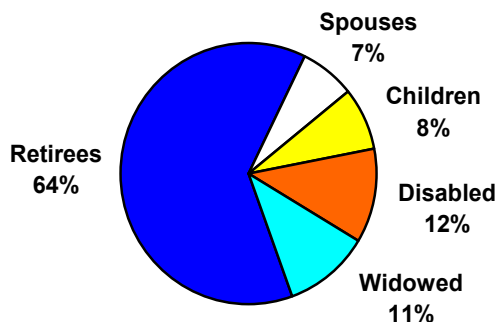
The average personal income in Montana was \$25,406 in 2003, giving it one of the lowest per capita incomes in the country (47th).⁴

One in six Montana residents receives Social Security.

The Social Security program not only provides monthly benefits to retired workers, but also to families when the worker retires, dies, or becomes disabled. In 2003, over 47 million Americans received Social Security benefits; of these, 163,720 live in Montana.⁵

In 2003, one in six Montana residents received Social Security. While 64% of beneficiaries are retirees, 36% are not: 17,140 are widows and widowers; 18,770 are disabled workers; 11,020 are wives and husbands; and 12,630 are children.⁶

Montana Social Security Beneficiaries



Social Security pumps 1.6 billion dollars into Montana's economy.

In 2003, Montana residents received \$1.6 billion from Social Security.⁶ The average yearly Social Security benefit for a Montana retiree in 2003 was \$10,620—or about \$885 a month.⁵

Nearly all Montana residents age 65 or older receive Social Security.

Nationally, almost 16% of all people receive Social Security benefits; in Montana, 18% of residents do. However, older people are more likely to receive the benefit, with 91% of those over age 65 receiving it nationwide, and 94% of older Montanans receiving it.¹

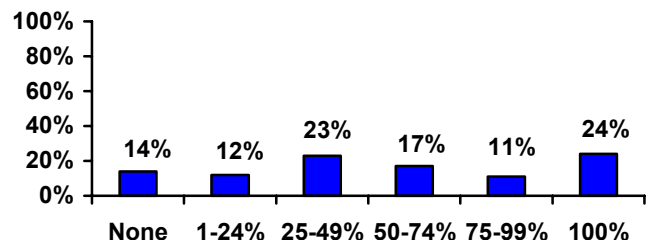
Social Security lifts half of Montana retirees from poverty.

Nearly half (47%) of the nation's older population would be living in poverty if they were not receiving Social Security. In Montana, 51% of the state's 65+ population (55,000 people) would have incomes below the poverty line if they did not have Social Security.⁷

Social Security is the only source of income for a quarter of Montanans age 65+.

Social Security makes up at least half of the income for more than half of Montanans age 65 and older. A quarter of older Montanans rely on Social Security as their only source of income.⁸

Income Percentage from Social Security for Montanans 65+



End Notes

¹ OASDI Beneficiaries by State and County, 2003. Social Security Administration:
http://www.ssa.gov/policy/docs/statcomps/oasdi_sc/2003/table1.html

² Projections of the Population, By Age and Sex, of States: 1995 to 2025. United States Census Bureau:
<http://www.census.gov/population/projections/state/stpjage.txt>

³ Projections of the Total Population of States: 1995 to 2025. United States Census Bureau:
<http://www.census.gov/population/projections/state/stpjpop.txt>

⁴ Bureau of Economic Analysis, US Dept. of Commerce:
<http://www.bea.gov/bea/regional/bearfacts/stateaction.cfm?fips=30000&yearin=2003>

⁵ OASDI Beneficiaries by State and County, 2003. Social Security Administration:
<http://www.ssa.gov/policy/docs/statcomps/supplement/2004/5j.html#table5.j4>

⁶ OASDI Estimated Total Benefits Paid, 2003, Social Security Administration:
<http://www.ssa.gov/policy/docs/statcomps/supplement/2004/5j.html#table5.j1>

⁷ Sherman, A. and Shapiro, I. (2005) *Social Security Lifts 13 Million Seniors Above the Poverty Line: A State by State Analysis*. Center on Budget and Policy Priorities:
www.cbpp.org/2-24-05socsec.htm

⁸ AARP analysis using data from U.S. Census Bureau: 2000
