



Social Security: Maryland Quick Facts



Maryland's aged population is expanding.

In 2003, Maryland's population was about 5,509,000, with 11% being age 65 and older (625,000 residents).¹ In 2015, the 65+ population will make up 13% of the state's population, and in 2025, it will be 16%.^{2,3}

Maryland ranks 5th in income level in the U.S.

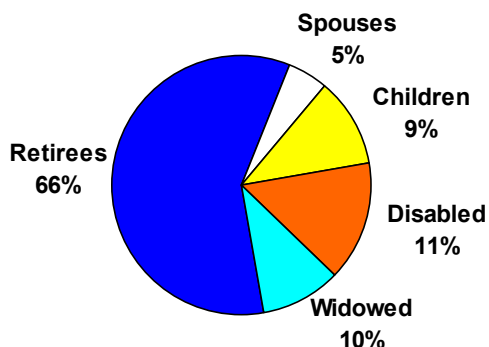
The average personal income in Maryland was \$37,446 in 2003. Maryland's per capita income (5th) ranks lower than Washington, D.C. (1st) but higher than any other Southeastern state.⁴

One in seven Maryland residents receives Social Security.

The Social Security program not only provides monthly benefits to retired workers, but also to families when the worker retires, dies, or becomes disabled. In 2003, over 47 million Americans received Social Security benefits; of these, 752,770 live in Maryland.⁵

In 2003, one in seven Maryland residents received Social Security. While 66% of beneficiaries are retirees, 34% are not: 81,690 are disabled workers; 76,670 are widows and widowers; 64,240 are children; and 36,560 are wives and husbands.⁶

Maryland Social Security Beneficiaries



Social Security pumps over 7 billion dollars into Maryland's economy.

In 2003, Maryland residents received 7.7 billion dollars from Social Security.⁶ The average yearly Social Security benefit for a Maryland retiree in 2003 was \$11,134—or about \$928 a month.⁵

Nearly all Maryland residents age 65 or older receive Social Security.

Nationally, almost 16% of all people receive Social Security benefits; in Maryland, 14% of residents do. However, older people are more likely to receive the benefit, with 91% of those over age 65 receiving it nationwide, and 88% of older Marylanders receiving it.¹

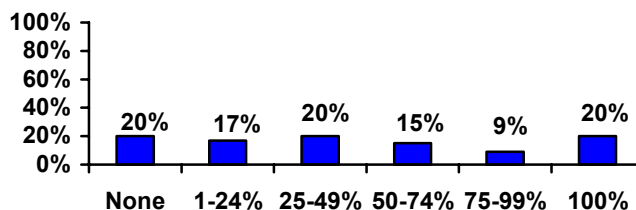
Social Security lifts nearly half of retirees from poverty.

Nearly half (47%) of the nation's older population would be living in poverty if they were not receiving Social Security. In Maryland, 40% of the state's 65+ population (196,000 people) would have incomes below the poverty line if they did not have Social Security.⁷

Social Security is the only source of income for over a fifth of Marylanders age 65+.

Social Security makes up 50 percent or more of the income for almost half of Marylanders age 65 and older. One fifth of older Marylanders rely on Social Security as their only source of income.⁸

Income Percentage from Social Security for Marylanders 65+



End Notes

¹ OASDI Beneficiaries by State and County, 2003. Social Security Administration:
http://www.ssa.gov/policy/docs/statcomps/oasdi_sc/2003/table1.html

² Projections of the Population, By Age and Sex, of States: 1995 to 2025. United States Census Bureau:
<http://www.census.gov/population/projections/state/stpjage.txt>

³ Projections of the Total Population of States: 1995 to 2025. United States Census Bureau:
<http://www.census.gov/population/projections/state/stpjpop.txt>

⁴ Bureau of Economic Analysis, US Dept. of Commerce:
<http://www.bea.gov/bea/regional/bearfacts/statebf.cfm>

⁵ OASDI Beneficiaries by State and County, 2003. Social Security Administration:
<http://www.ssa.gov/policy/docs/statcomps/supplement/2004/5j.html#table5.j4>

⁶ OASDI Estimated Total Benefits Paid, 2003, Social Security Administration:
<http://www.ssa.gov/policy/docs/statcomps/supplement/2004/5j.html#table5.j1>

⁷ Sherman, A. and Shapiro, I. (2005) *Social Security Lifts 13 Million Seniors Above the Poverty Line: A State by State Analysis*. Center on Budget and Policy Priorities:
www.cbpp.org/2-24-05socsec.htm

⁸ AARP analysis using data from U.S. Census Bureau: 2000
