



Social Security: Louisiana Quick Facts



Louisiana’s aged population is expanding.

In 2003, Louisiana’s population was about 4,496,000 with 12% being age 65 and older (524,000 residents).¹ In 2015, the 65+ population will make up 15% of the state’s population, and in 2025, it will be 18%.^{2,3}

Louisiana is one of the poorest U.S. states.

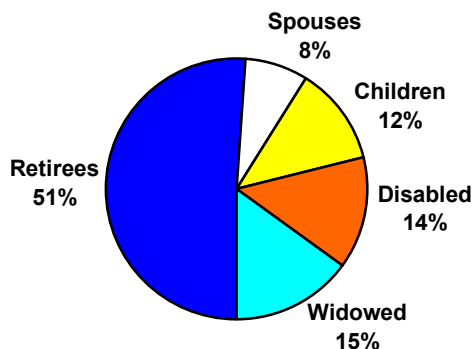
The average personal income in Louisiana was \$26,312 in 2003. Louisiana’s per capita income (43rd) ranks lower than Texas (30th) but higher than Mississippi (51st).⁴

One in six Louisiana residents receives Social Security.

The Social Security program not only provides monthly benefits to retired workers, but also to families when the worker retires, dies, or becomes disabled. In 2003, over 47 million Americans received Social Security benefits; of these, 731,080 live in Louisiana.⁵

In 2003, one in six Louisiana residents received Social Security. While 51% of beneficiaries are retirees, 49% are not: 105,980 are widows and widowers; 103,980 are disabled workers; 88,570 are children; and 59,250 are wives and husbands.⁶

Louisiana Social Security Beneficiaries



Social Security pumps almost 7 billion dollars into Louisiana’s economy.

In 2003, Louisiana residents received 6.8 billion dollars from Social Security.⁶ The average yearly Social Security benefit for a Louisiana retiree in 2003 was \$10,292—or about \$858 a month.⁵

Nearly all Louisiana residents age 65 or older receive Social Security.

Nationally, almost 16% of all people receive Social Security benefits; in Louisiana, 16% of residents do. However, older people are more likely to receive the benefit, with 91% of those over age 65 receiving it nationwide, and 90% of older Louisianans receiving it.¹

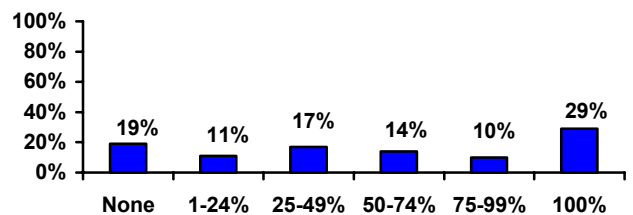
Social Security lifts half of Louisiana retirees from poverty.

Nearly half (47%) of the nation’s older population would be living in poverty if they were not receiving Social Security. In Louisiana, 50% of the state’s 65+ population (192,000 people) would have incomes below the poverty line if they did not have Social Security.⁷

Social Security is the only source of income for nearly three in ten Louisianans age 65+.

Social Security makes up 50 percent or more of the income for over half of Louisianans age 65 and older. Nearly three in ten older Louisianans rely on Social Security as their only source of income.⁸

Income Percentage from Social Security for Louisianans 65+



End Notes

¹ OASDI Beneficiaries by State and County, 2003. Social Security Administration:
http://www.ssa.gov/policy/docs/statcomps/oasdi_sc/2003/table1.html

² Projections of the Population, By Age and Sex, of States: 1995 to 2025. United States Census Bureau:
<http://www.census.gov/population/projections/state/stpjage.txt>

³ Projections of the Total Population of States: 1995 to 2025. United States Census Bureau:
<http://www.census.gov/population/projections/state/stpjpop.txt>

⁴ Bureau of Economic Analysis, US Dept. of Commerce:
<http://www.bea.gov/bea/regional/bearfacts/statebf.cfm>

⁵ OASDI Beneficiaries by State and County, 2003. Social Security Administration:
<http://www.ssa.gov/policy/docs/statcomps/supplement/2004/5j.html#table5.j4>

⁶ OASDI Estimated Total Benefits Paid, 2003, Social Security Administration:
<http://www.ssa.gov/policy/docs/statcomps/supplement/2004/5j.html#table5.j1>

⁷ Sherman, A. and Shapiro, I. (2005) *Social Security Lifts 13 Million Seniors Above the Poverty Line: A State by State Analysis*. Center on Budget and Policy Priorities:
www.cbpp.org/2-24-05socsec.htm

⁸ AARP analysis using data from U.S. Census Bureau: 2000
