



# Social Security: Hawai'i Quick Facts



## Hawai'i's aged population is expanding.

In 2003, Hawai'i's population was about 1.3 million, with 13% being age 65 and older (3.8 million residents).<sup>1</sup> In 2015, the 65+ population will make up 14% of the state's population, and in 2025, it will be 16%.<sup>2,3</sup>

## Hawai'i ranks 23<sup>rd</sup> in income level among the U.S. states.

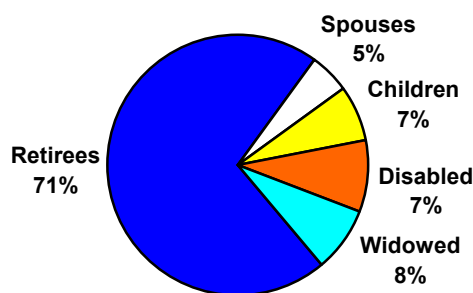
The average personal income in Hawai'i was \$30,441 in 2003. Hawai'i's per capita income (23<sup>rd</sup>) ranks lower than California (12<sup>th</sup>) but higher than Arizona (39<sup>th</sup>).<sup>4</sup>

## One in seven Hawai'i residents receives Social Security.

The Social Security program not only provides monthly benefits to retired workers, but also to families when the worker retires, dies, or becomes disabled. In 2003, over 47 million Americans received Social Security benefits; of these, 195,430 live in Hawai'i.<sup>5</sup>

In 2003, one in six Hawai'i residents received Social Security. While 71% of beneficiaries are retirees, 29% are not: 16,090 are widows and widowers; 16,790 are disabled workers; 9,620 are wives and husbands; and 13,630 are children.<sup>5</sup>

**Hawai'i Social Security Beneficiaries**



## Social Security pumps almost 2 billion dollars into Hawai'i's economy.

In 2003, Hawai'i residents received an estimated 1.9 billion dollars from Social Security.<sup>6</sup> The average yearly Social Security benefit for a Hawai'i retiree in 2003 was \$10,944—or about \$912 a month.<sup>5</sup>

## Nearly all Hawai'i residents age 65 or older receive Social Security.

Nationally, almost 16% of all people receive Social Security benefits; in Hawai'i, 15% of residents also receive benefits. However, older people are more likely to receive Social Security, with 91% of those over age 65 receiving it nationwide, and 88% of older Hawai'i residents receiving it.<sup>1</sup>

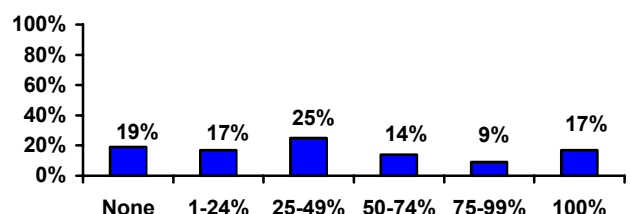
## Social Security lifts nearly half of retirees from poverty.

Nearly half (47%) of the nation's older population would be living in poverty if they were not receiving Social Security. In Hawai'i, 28% of the state's 65+ population (35,000 people) would have incomes below the poverty line if they did not have Social Security.<sup>7</sup>

## Social Security is the only source of income for one in six Hawai'i age 65+.

Social Security makes up at least half of the income for almost half of residents age 65 and older. One sixth of older Hawai'i residents rely on Social Security as their only source of income.<sup>8</sup>

**Income Percentage from Social Security for Hawai'i Residents 65+**



## End Notes

<sup>1</sup> OASDI Beneficiaries by State and County, 2003.  
Social Security Administration:  
[http://www.ssa.gov/policy/docs/statcomps/oasdi\\_sc/2003/table1.html](http://www.ssa.gov/policy/docs/statcomps/oasdi_sc/2003/table1.html)

<sup>2</sup> Projections of the Population, By Age and Sex, of States, Projections of the Total Population of States: 1995 to 2025, . United States Census Bureau:  
<http://www.census.gov/population/projections/state/stpja/ge.txt>

<sup>3</sup> Projections of the Total Population of States: 1995 to 2025. United States Census Bureau:  
<http://www.census.gov/population/projections/state/stppop.txt>

<sup>4</sup> Bureau of Economic Analysis, US Dept. of Commerce:  
<http://www.bea.gov/bea/regional/bearfacts/statebf.cfm>

<sup>5</sup> OASDI Current-Pay Benefits Geographic Data, 2003.  
Social Security Administration:  
<http://www.ssa.gov/policy/docs/statcomps/supplement/>

<sup>6</sup> OASDI Estimated Total Benefits Paid, 2003, Social Security Administration:  
<http://www.ssa.gov/policy/docs/statcomps/supplement/2004/5j.html>

<sup>7</sup> Sherman, A. and Shapiro, I. (2005) *Social Security Lifts 13 Million Seniors Above the Poverty Line: A State by State Analysis*. Center on Budget and Policy Priorities: [www.cbpp.org/2-24-05socsec.htm](http://www.cbpp.org/2-24-05socsec.htm)

<sup>8</sup> AARP analysis using data from U.S. Census Bureau: 2000

---