



Social Security: Connecticut Quick Facts



Connecticut's aged population is expanding.

In 2003, Connecticut's population was about 3,483,000 with 14% being age 65 and older (471,000 residents).¹ In 2015, the 65+ population will make up 15% of the state's population, and in 2025, it will be 18%.^{2,3}

Connecticut per capital income ranks 2nd in the U.S.

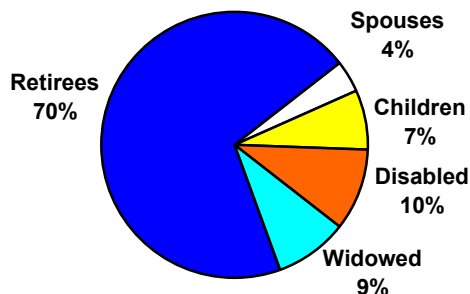
The average personal income in Connecticut was \$42,972 in 2003. Connecticut's per capita income ranks higher than all the other states, and is second only to the District of Columbia.⁴

One in six Connecticut residents receives Social Security.

The Social Security program not only provides monthly benefits to retired workers, but also to families when the worker retires, dies, or becomes disabled. In 2003, over 47 million Americans received Social Security benefits; of these, 583,220 live in Connecticut.⁵

In 2003, one in six Connecticut residents received Social Security. While 70% of beneficiaries are retirees, 30% are not: 59,530 are disabled workers; 49,720 are widows and widowers; 42,040 are children; and 25,780 are wives and husbands.⁶

Connecticut Social Security Beneficiaries



Social Security pumps over 6 billion dollars into Connecticut's economy.

In 2003, Connecticut residents received 6.4 billion dollars from Social Security.⁶ The average yearly Social Security benefit for a Connecticut retiree in 2003 was \$12,125—or about \$1010 a month.⁵

Nearly all Connecticut residents age 65 or older receive Social Security.

Nationally, almost 16% of all people receive Social Security benefits; in Connecticut, 17% of residents do. However, older people are more likely to receive the benefit, with 91% of those over age 65 receiving it nationwide, and 95% of older Connecticut residents receiving it.¹

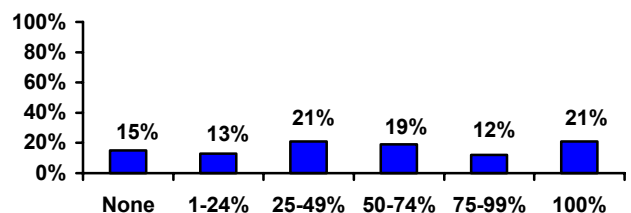
Social Security lifts nearly half of retirees from poverty.

Nearly half (47%) of the nation's older population would be living in poverty if they were not receiving Social Security. In Connecticut, 37% of the state's 65+ population (157,000 people) would have incomes below the poverty line if they did not have Social Security.⁷

Social Security is the only source of income for one in five Connecticut residents age 65+.

Social Security makes up at least half of the income for 52% of Connecticut residents age 65 and older. One in five older Connecticut residents rely on Social Security as their only source of income.⁸

Income Percentage from Social Security for Connecticut Residents 65+



End Notes

¹ OASDI Beneficiaries by State and County, 2003. Social Security Administration:
http://www.ssa.gov/policy/docs/statcomps/oasdi_sc/2003/table1.html

² Projections of the Population, By Age and Sex, of States: 1995 to 2025. United States Census Bureau:
<http://www.census.gov/population/projections/state/stpjage.txt>

³ Projections of the Total Population of States: 1995 to 2025. United States Census Bureau:
<http://www.census.gov/population/projections/state/stpjpop.txt>

⁴ Bureau of Economic Analysis, US Dept. of Commerce:
<http://www.bea.gov/bea/regional/bearfacts/statebf.cfm>

⁵ OASDI Beneficiaries by State and County, 2003. Social Security Administration:
<http://www.ssa.gov/policy/docs/statcomps/supplement/2004/5j.html#table5.j4>

⁶ OASDI Estimated Total Benefits Paid, 2003, Social Security Administration:
<http://www.ssa.gov/policy/docs/statcomps/supplement/2004/5j.html#table5.j1>

⁷ Sherman, A. and Shapiro, I. (2005) *Social Security Lifts 13 Million Seniors Above the Poverty Line: A State by State Analysis*. Center on Budget and Policy Priorities:
www.cbpp.org/2-24-05socsec.htm

⁸ AARP analysis using data from U.S. Census Bureau: 2000
